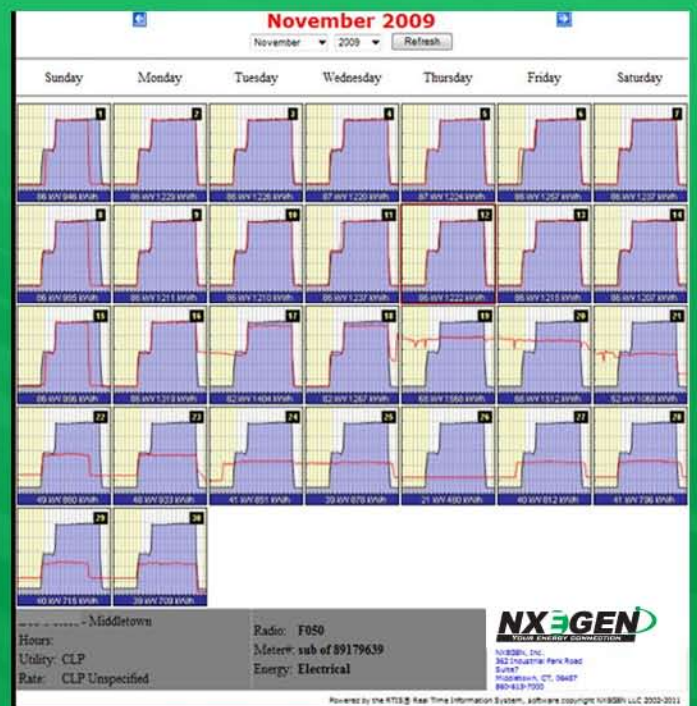
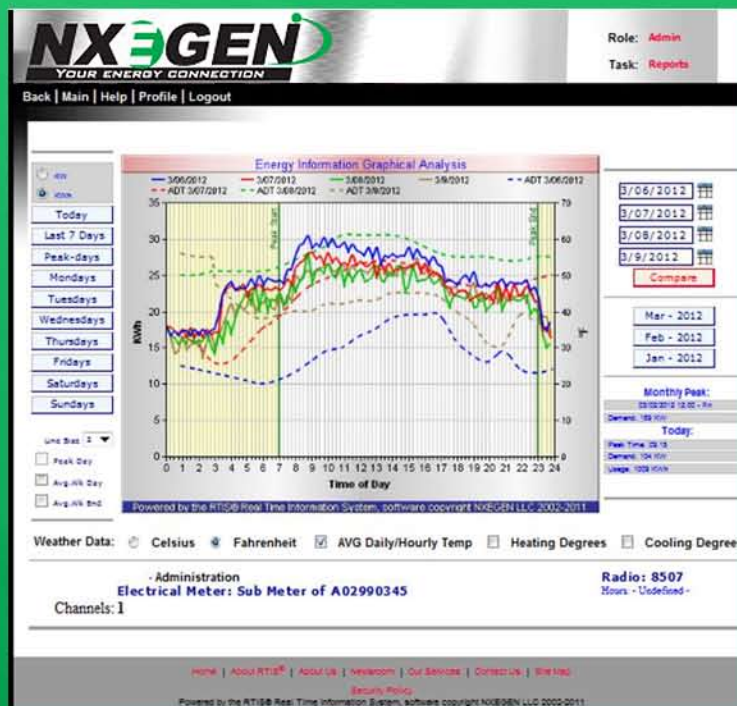
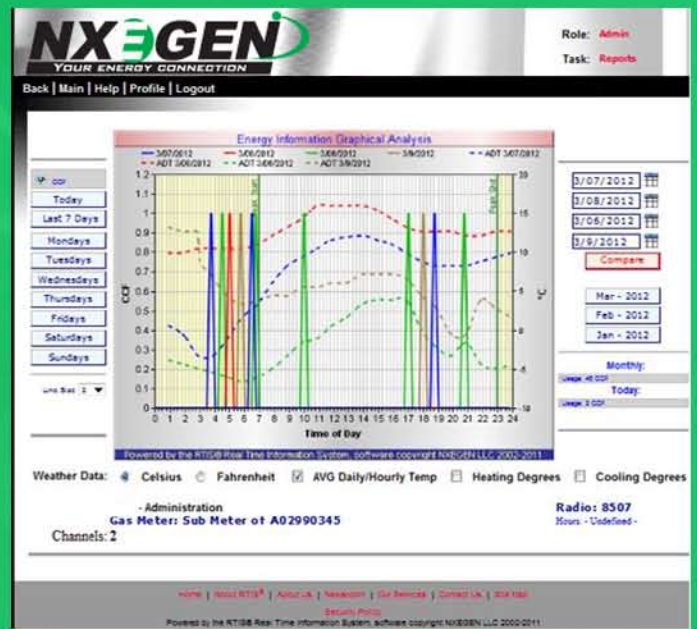
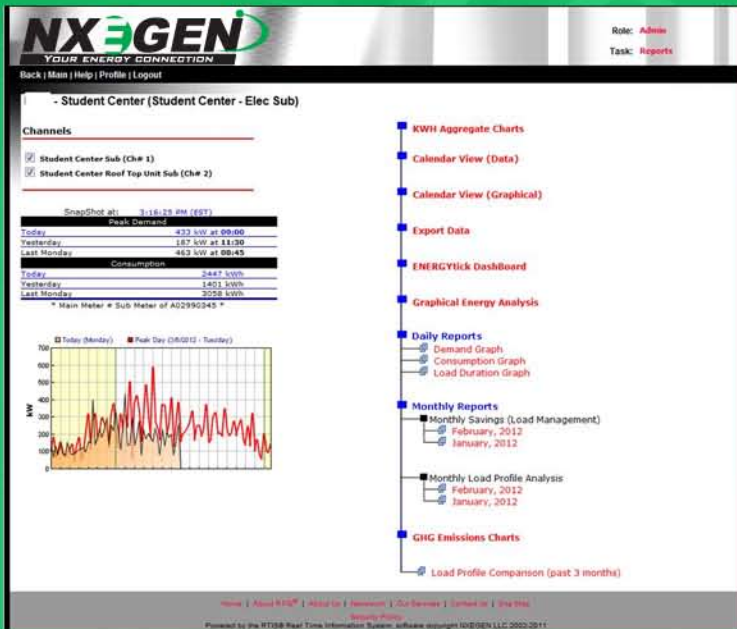
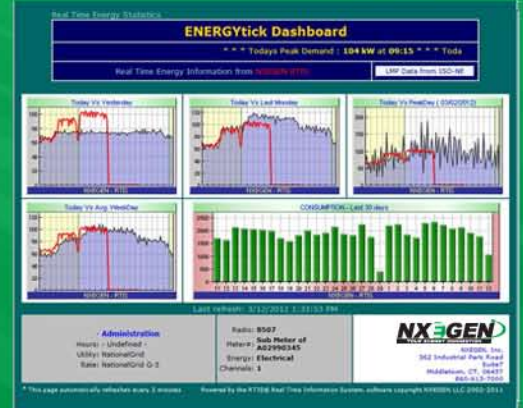
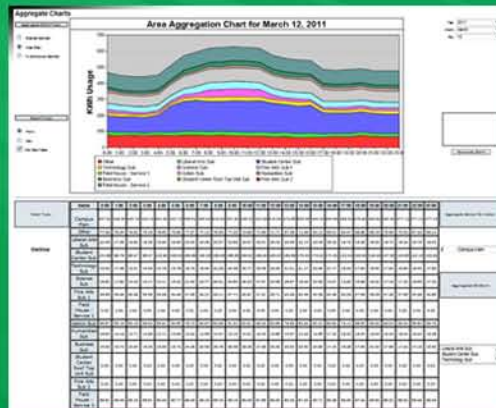
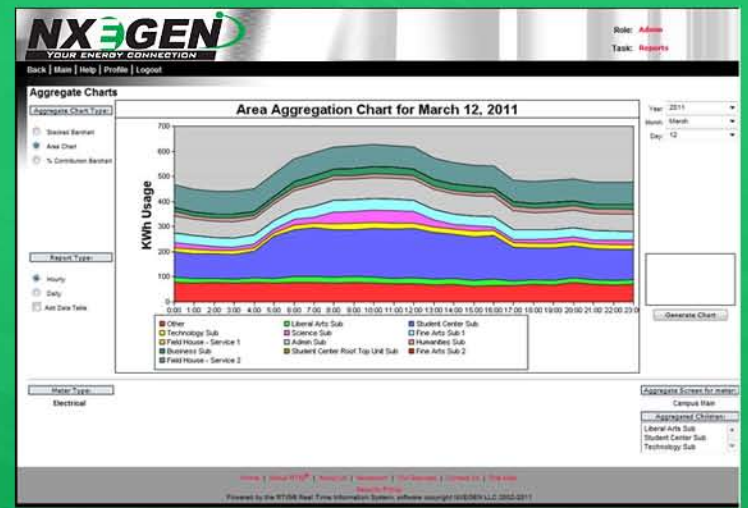
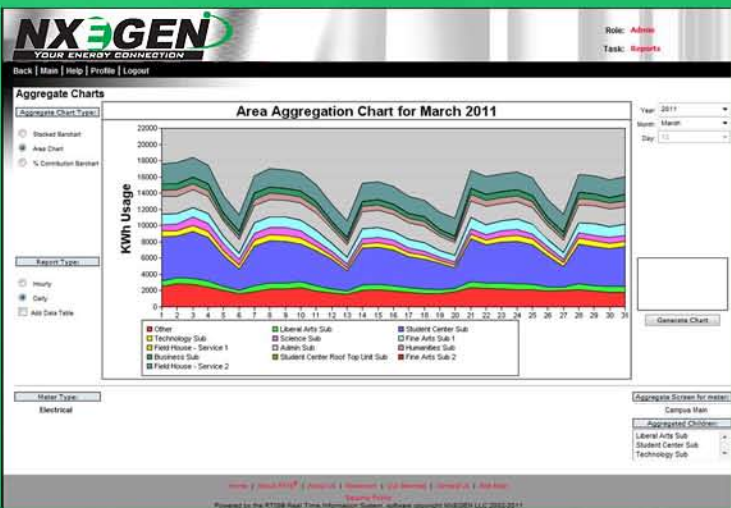
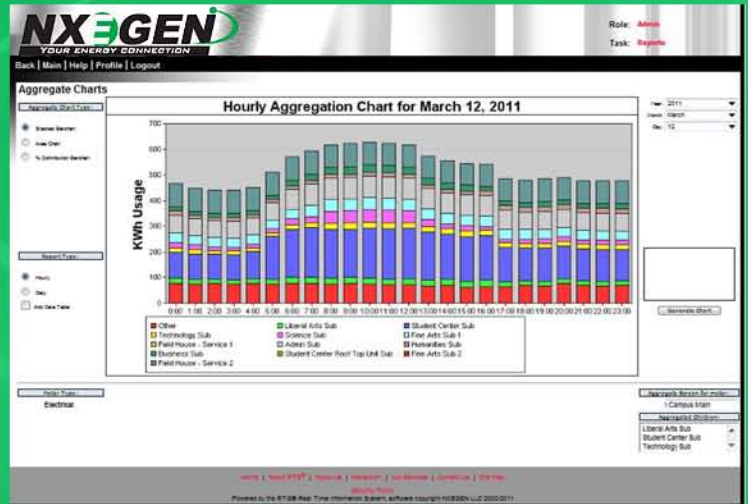
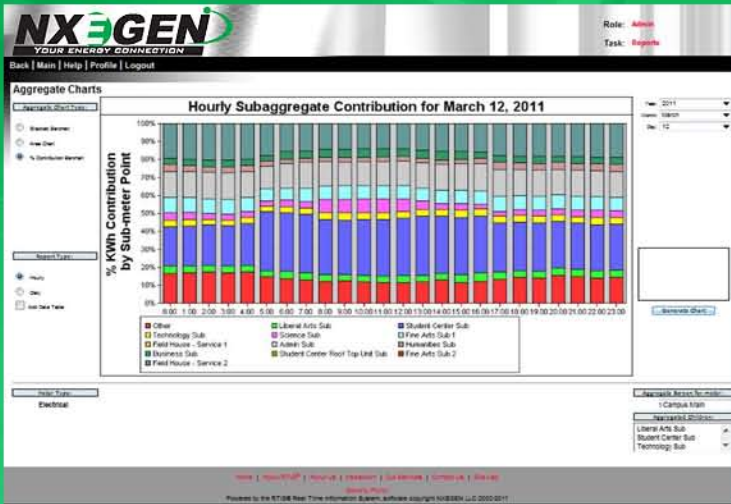


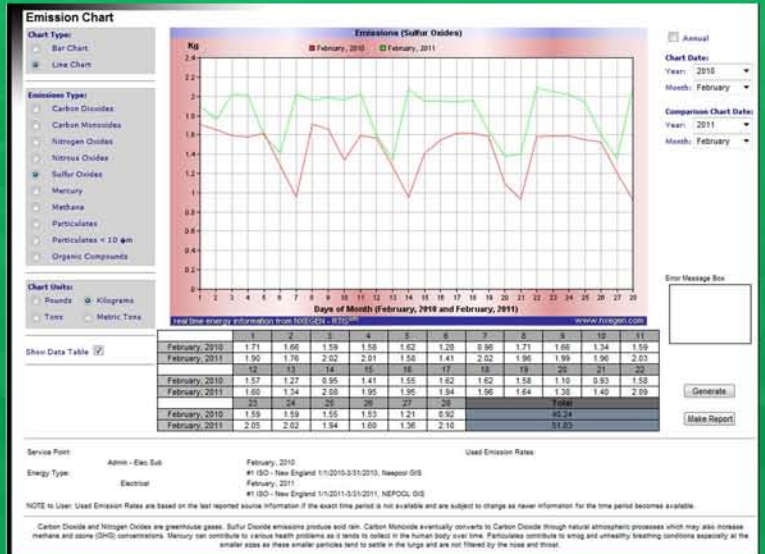
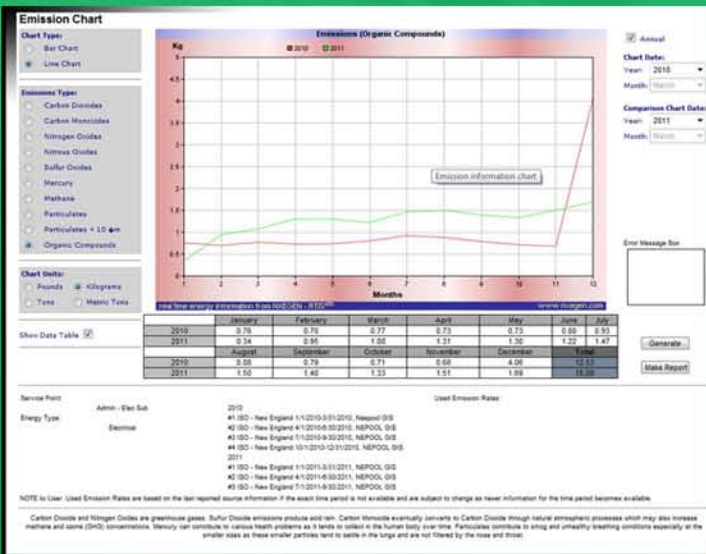
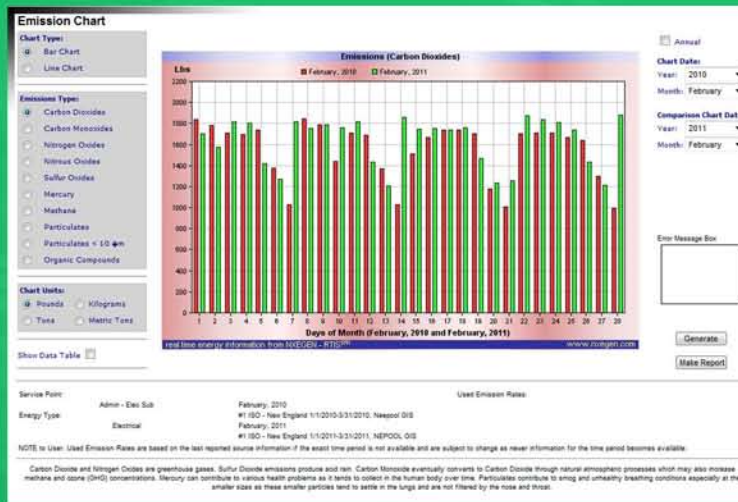
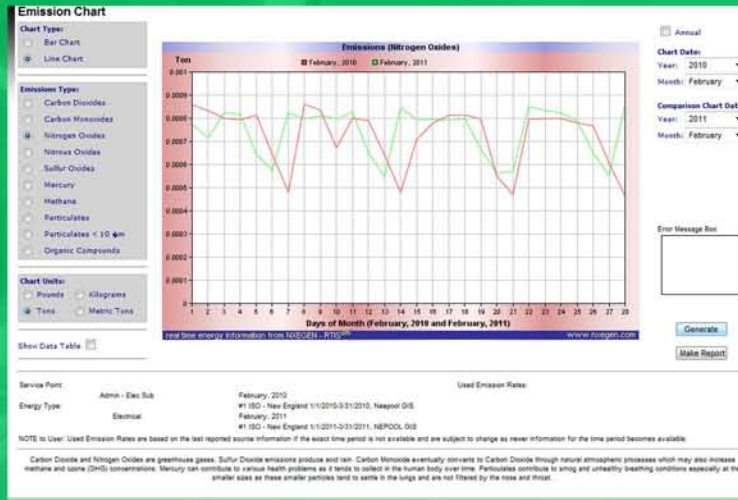
RTIS® Real Time Information System



RTIS[®] Real Time Information System



RTIS® Emission Charts



RTIS[®] Reports

NXGEN
YOUR ENERGY CONNECTION

Role: Admin
Task: Reports
Thomas Hurley

Back | Main | Help | Profile | Logout

Select Service Channels

Service Point Name: Admin - Elec Sub
Energy Type: Electrical
Description:
Location's Details:
Location's Type Construction:

Report Type: Demand Graph Add weather data
Time Period: 15 Min
Date Range Start: 3/12/2012
End: 3/12/2012
Orientation: Portrait

Select the desired channel or multiple channels if you wish information to be aggregated.

Radio ID	Service Channel Name	Channel Number	Energy Type
0507	Admin Sub	1	Electrical

Powered by the RTIS® Real Time Information System, software copyright NXGEN LLC 2002-2011

NXGEN
YOUR ENERGY CONNECTION

Energy Management Services
February 2012
Monthly Load Profile Analysis

Month	Total kWh used	Peak Demand (kW)	Load Factor	Average Daily kWh used	Weekday	Saturday	Sunday	Average Daily Demand	Weekday	Saturday	Sunday
February 2012	54,184.79 kWh	210.72 kW	36.94%	1,812.49 kWh	1,757.13 kWh	1,660.06 kWh	99.57 kW	73.21 kW	99.57 kW	73.21 kW	99.57 kW
January 2012	30,600 kWh	100 kW	40%	1,020 kWh	1,020 kWh	1,020 kWh	34.36 kW	34.36 kW	34.36 kW	34.36 kW	34.36 kW
December 2011	30,600 kWh	100 kW	40%	1,020 kWh	1,020 kWh	1,020 kWh	34.36 kW	34.36 kW	34.36 kW	34.36 kW	34.36 kW
Combined	54,184.79 kWh	210.72 kW	36.94%	1,812.49 kWh	1,757.13 kWh	1,660.06 kWh	99.57 kW	73.21 kW	99.57 kW	73.21 kW	99.57 kW

3/12/2012 Page 1 of 1 Confidential Information

NXGEN
YOUR ENERGY CONNECTION

Energy Management Services
February 2012
Monthly Load Profile Analysis

Location: Admin - Elec Sub, ELECTRICAL
Address:
Service Point: Admin - Elec Sub, ELECTRICAL
Service Channel: Admin Sub
Willy: NationalGrid
Any Code: NationalGrid 6-3
Radio ID: 0507
Channel Number: 1
Energy Type: Electrical
Meter Number: Sub Meter of 82299341

Facility Statistics for February 2012

Total kilowatt hours used during this month: **54,184.79 kWh**
Peak demand (kW) for the month: **210.72 kW** on 02/28/2012 at 13:00
Facility Load Factor for the month: **36.94%**

Average kilowatt hours consumed per day:	Weekday	Saturday	Sunday
	1,812.49 kWh	1,757.13 kWh	1,660.06 kWh
Average demand per day:	99.57 kW	73.21 kW	99.57 kW

3/12/2012 Confidential Information

NXGEN
YOUR ENERGY CONNECTION

Energy Information Monitoring Services

Service Location Information
Location: Admin - Elec Sub, ELECTRICAL
Address:
Service Point: Admin - Elec Sub, ELECTRICAL
Service Channel: Admin Sub

Demand Graph Plotted for Time Period: 3/12/2012 - 3/13/2012

NOTE: Peak = 7:00 AM to 10:59 PM M-F; All other hours = Off Peak (ISO definition)

Statistical Information

All	Peak	Off Peak
Max kW: 104.55	Max kW: 104.55	Max kW: 94.30
Min kW: 60.62	Min kW: 63.51	Min kW: 60.62
Avg kW: 86.00	Avg kW: 96.83	Avg kW: 75.26
Total kWh: 0.00	Total kWh: 0.00	Total kWh: 0.00
Average Cost kWh: 0.05		

Page 1 of 1
Powered by the RTIS® Real Time Information System, software copyright NXGEN LLC 2002-2011

NXGEN
YOUR ENERGY CONNECTION

Energy Information Monitoring Services

Service Location Information
Location: Admin - Elec Sub, ELECTRICAL
Address:
Service Point: Admin - Elec Sub, ELECTRICAL
Service Channel: Admin Sub

Load Duration Curve for Time Period: 3/12/2012 - 3/13/2012

The load duration curve represents an "electrical footprint" of a site - the power consumption over a daily, weekly, monthly or specified period. The objective is to flatten the curve as much as possible. This will reduce the kW capacity required and therefore the kW charges. It starts at the 100% level indicating the maximum kW value and the % of time that energy demand (kW) is lower than that value.

Capacity-based line charges (or kW charges) are essentially a fixed charge, regardless of the volume of energy (kWh) consumed. Flattening the load duration curve increases your site's electrical load factor (relationship between kW and kWh) and is an effective way of reducing your average total energy expenditure in cents/kWh.

Page 1 of 1
Powered by the RTIS® Real Time Information System, software copyright NXGEN LLC 2002-2011

DDE Screens

Filter Parameters

- Fully Unreporting: 5.6
- Partially Unreporting: 6.6
- Fully Opted Out: 1.2
- Partially Opted Out: 2.2
- Major Underperforming: 0.0
- Minor Underperforming: 0.0
- Overperforming: 0.0
- Healthy: 0.0
- Undispatched: 22.72
- All: 36.88

Resources

- 36%
- 14%
- 7%
- 43%

Assets

- 38%
- 12%
- 12%
- 38%

Resource	Name	Delta KW	Dispatch KW	Max KW	Delta/Dispatch KW	Delta/Max KW	Is Dispatched
11361	Wallingford	-572	0	-10000	N/A	5.72 %	
12738	General Western CT	-35	0	-6000	N/A	0.58 %	
1577	Miford East	-61	0	-1000	N/A	6.10 %	
12154	Menden	12	0	-1000	N/A	-1.20 %	
999999	CMEEC Headquarters	102	0	-1000	N/A	-10.20 %	
980000	FTP channel test resource	0	0	-1000	N/A	0.00 %	
10362	RTU Test	21	0	-100	N/A	-21.00 %	
666	Resource Test	0	0	-100	N/A	0.00 %	
1000	Test	0	0	121	N/A	0.00 %	
99995	Maine	0	0	1000	N/A	0.00 %	
99998	transformer 1	0	0	1000	N/A	0.00 %	
99996	Maine	0	0	1000	N/A	0.00 %	
99993	SNEW (2nd Taxing District)	70477	0	100000	N/A	70.48 %	
99992	Norwich Public Utility	72448	0	100000	N/A	72.45 %	

Filter Parameters

- Fully Unreporting: 5.6
- Partially Unreporting: 6.6
- Fully Opted Out: 1.2
- Partially Opted Out: 2.2
- Major Underperforming: 0.0
- Minor Underperforming: 0.0
- Overperforming: 0.0
- Healthy: 0.0
- Undispatched: 22.72
- All: 36.88

Resources

- 36%
- 14%
- 7%
- 43%

Assets

- 38%
- 12%
- 12%
- 38%

Asset	Name	Delta KW	Dispatch KW	Max KW	Delta/Dispatch KW	Delta/Max KW	Is Dispatched
Resource: 666	Resource Test	0	0	-100	N/A	0.00 %	
Resource: 1000	Test	0	0	100	N/A	0.00 %	
Resource: 1577	Miford East	-61	-1000	-1000	5.81 %	6.10 %	
Resource: 10362	RTU Test	21	0	-100	N/A	-21.00 %	
Resource: 12154	Menden Marhu	-4	-1000	-500	0.39 %	0.80 %	
Resource: 12738	General Western CT	-35	-57.59	-500	9.15 %	10.30 %	
Resource: 11361	Wallingford	-572	-1100	-10000	5.20 %	5.72 %	

Filter Parameters

- Fully Unreporting: 5.6
- Partially Unreporting: 6.6
- Fully Opted Out: 1.2
- Partially Opted Out: 2.2
- Major Underperforming: 0.0
- Minor Underperforming: 0.0
- Overperforming: 0.0
- Healthy: 0.0
- Undispatched: 22.72
- All: 36.88

Resources

- 36%
- 14%
- 7%
- 43%

Assets

- 38%
- 12%
- 12%
- 38%

Resource ID	Dispatch Time	Effective Time	KW	AUDT
999999	2/24/2012 5:06 AM	2/24/2012 5:40 AM	0	No
999998	2/24/2012 5:06 AM	2/24/2012 5:40 AM	0	No
999997	2/24/2012 5:06 AM	2/24/2012 5:40 AM	0	No
999996	2/24/2012 5:06 AM	2/24/2012 5:40 AM	0	No
999995	2/24/2012 5:06 AM	2/24/2012 5:40 AM	0	No
999994	2/24/2012 5:06 AM	2/24/2012 5:40 AM	0	No
999993	2/24/2012 5:06 AM	2/24/2012 5:40 AM	0	No
999992	2/24/2012 5:06 AM	2/24/2012 5:40 AM	0	No
999991	2/24/2012 5:06 AM	2/24/2012 5:40 AM	0	No
999990	2/24/2012 5:06 AM	2/24/2012 5:40 AM	0	No
999989	2/23/2012 8:36 AM	2/23/2012 9:10 AM	530	No
999988	2/23/2012 8:36 AM	2/23/2012 9:10 AM	15600	No
999994	2/23/2012 8:36 AM	2/23/2012 9:10 AM	35000	No
999992	2/23/2012 8:36 AM	2/23/2012 9:10 AM	35000	No

Resources:

- Wallingford: Max KW: 10000, Dispatch KW: 0
- Miford East: Max KW: 1000, Dispatch KW: 0
- General Western CT: Max KW: 6000, Dispatch KW: 0
- CMEEC Headquarters: Max KW: 10000, Dispatch KW: 200
- SNEW (2nd Taxing District): Max KW: 100000, Dispatch KW: 6500
- RTU Test: Max KW: 100, Dispatch KW: 0
- Menden: Max KW: 1000, Dispatch KW: 0
- Norwich Public Utility: Max KW: 100000, Dispatch KW: 35000
- Miford Devon: Max KW: 5000, Dispatch KW: 0
- North Haven Municipal: Max KW: 1000, Dispatch KW: 0
- North Haven Commercial: Max KW: 2000, Dispatch KW: 0

Dispatch Instructions:

ResourceID	Dispatch Time	Effective Time	KW	AUDT	CDAT, ET
999999	2/24/2012 5:06:52 AM, EST	2/24/2012 5:40:00 AM, EST	0	No	2/24/2012 5:04:18 AM
999998	2/24/2012 5:06:21 AM, EST	2/24/2012 5:40:00 AM, EST	0	No	2/24/2012 5:04:07 AM
999997	2/24/2012 5:06:21 AM, EST	2/24/2012 5:40:00 AM, EST	0	No	2/24/2012 5:04:06 AM
999996	2/24/2012 5:06:21 AM, EST	2/24/2012 5:40:00 AM, EST	0	No	2/24/2012 5:04:05 AM
999995	2/24/2012 5:06:21 AM, EST	2/24/2012 5:40:00 AM, EST	0	No	2/24/2012 5:04:03 AM

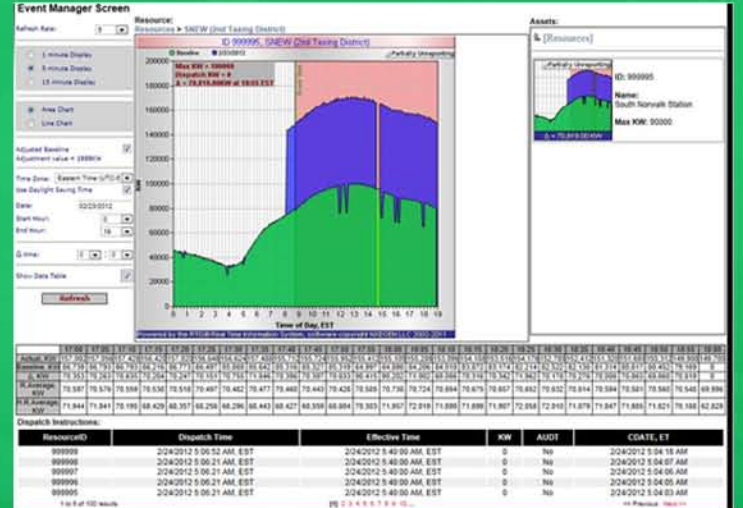
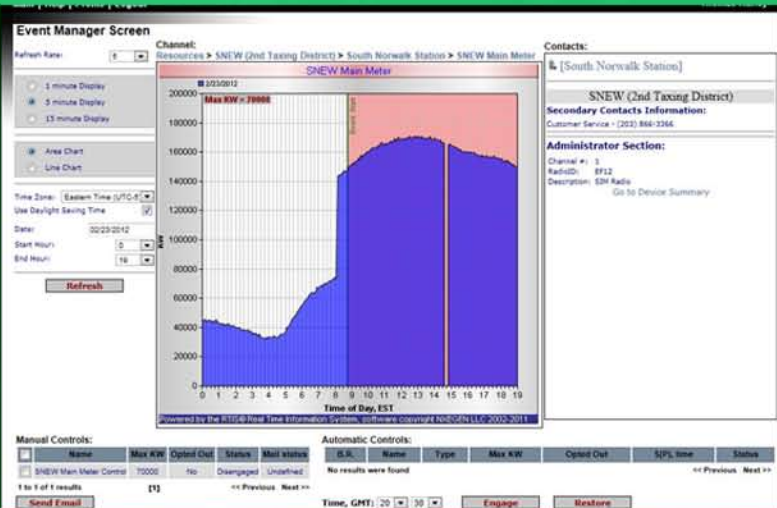
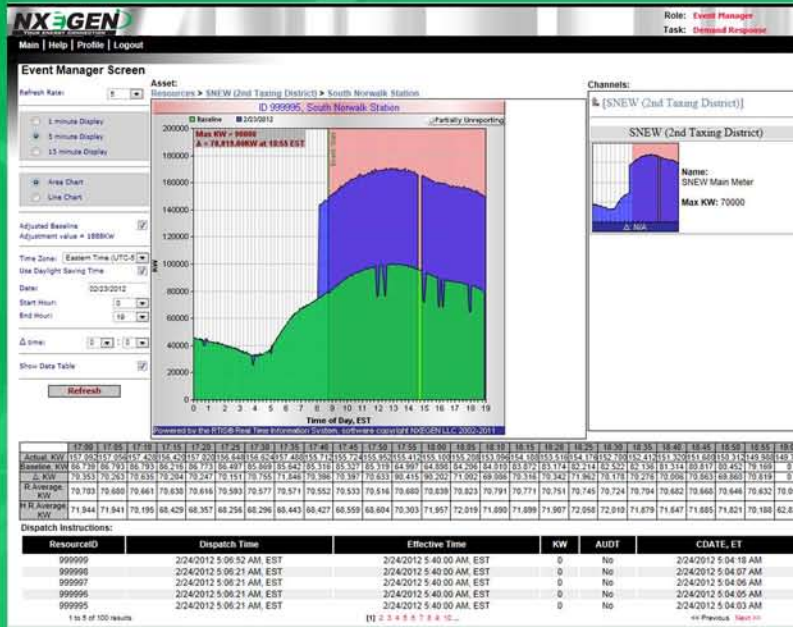
ASSETS (64):

- test automatic control asset: Max KW: 100
- Test Asset For Resource #666: Max KW: 100
- FTP channel test asset: Max KW: 500
- Smitty's School for Young Women: Max KW: 10000
- Wallingford Acid Baths Inc: Max KW: 10000
- Keegan Industrial Complex: Max KW: 500
- South Norwalk Station: Max KW: 90000
- Demand Response Asset: Max KW: 1000
- Resource is Partially Opted Out: Max KW: 5000
- Assets is Partially Opted Out: Max KW: 1000

Dispatch Instructions:

ResourceID	Dispatch Time	Effective Time	KW	AUDT	CDAT, ET
999999	2/24/2012 5:06:52 AM, EST	2/24/2012 5:40:00 AM, EST	0	No	2/24/2012 5:04:18 AM
999998	2/24/2012 5:06:21 AM, EST	2/24/2012 5:40:00 AM, EST	0	No	2/24/2012 5:04:07 AM
999997	2/24/2012 5:06:21 AM, EST	2/24/2012 5:40:00 AM, EST	0	No	2/24/2012 5:04:06 AM
999996	2/24/2012 5:06:21 AM, EST	2/24/2012 5:40:00 AM, EST	0	No	2/24/2012 5:04:05 AM
999995	2/24/2012 5:06:21 AM, EST	2/24/2012 5:40:00 AM, EST	0	No	2/24/2012 5:04:03 AM

DDE Screens



Smart DDE Models

Action	Resource ID	Model Name	Description	MIN	MAX	UPDATE
[X]	1000	Resource 1000 Model		40	50	1/4/2012 10:51:08 AM
[X]	1577	8% Millford East 8% Reduction Model		0	8	5/24/2011 4:16:28 PM
[X]	1577	20% Millford East Model	20% Mistake Model	0	20	5/24/2011 4:49:37 PM
[X]	10006	NHM level A	Level A response	0	10	1/7/2011 3:45:15 PM
[X]	10006	NHMLevel B	Response 50% response model	10	50	1/7/2011 3:47:36 PM
[X]	10362	conc test		0	10	3/4/2011 11:38:33 AM
[X]	11379	NHC Level B response	30-50 reduction	30	50	1/7/2011 3:40:43 PM
[X]	11379	NHC Level A Response	asset level	0	30	1/7/2011 3:41:43 PM
[X]	11379	NHC Level C Response	50-60 model	50	60	1/7/2011 3:43:11 PM
[X]	12154	First Level	10% reduction	0	10	1/5/2011 4:22:53 PM

Opt In / Opt Out

- RTS
- CMEEC
 - 50 in 5
 - Borough of Jewett City DPW
 - Groton Utilities
 - Madogang Tribal Utility Authority
 - Marwick Public Utilities
 - Marwick Station Loc 1
 - Marwick Station Loc 2
 - Location 2
 - SNEW (2nd Taxing District)
 - Third Taxing District
 - Wallingford Electric Division
 - ZZ - City of New Haven
 - CMEEC Headquarters
 - United Illuminating
 - ZZ Test Utility

Selected: none